

YTX-6000 X-Ray

Automated In-line X-Ray Inspection System

- Highest Defect Detection
- Fast Throughput
- Quick Set-up
- Cost Effective

YESTech's versatile YTX-6000 conveyORIZED Inspection System offers SMT and semiconductor packagers complete inspection of critical hidden features and solder joints. The YTX-6000's proven inspection algorithms provide fast and complete inspection of PCB and other assemblies.

Programming the YTX-6000 is fast and intuitive. Operators typically take less than 30 minutes to create a complete inspection program. The YTX-6000 utilizes a standard package library to simplify training and insure program portability across manufacturing lines.

Newly available image processing technology integrates several techniques and inspection algorithms, to provide complete inspection coverage with an extremely low false failure rate.

Remote programming maximizes machine utilization and real-time SPC monitoring provides a valuable yield enhancement solution.



Automated Inspection for:

- Visible and hidden solder joints
- BGA / Flip Chips
- Leads
- Component presence and position
- Voids
- Electronic and sealed assemblies

YTX-6000 Specifications

X-Ray Tube:

Maintenance free
Sealed reflection target
130 Kv, 5 micron spot size
39-watt max. output

Software :

CAD Input: Pick and place data, CAD x-y data
CAD Translation Package: Excel, Circuitcam, Unicam, CIMBridge, Fabmaster
Programming Skill Level: Technician or operator
Operating System: Windows XP

Inspection Capabilities:

Throughput: 250ms per frame
Maximum Board Size: 18" x 20" (450mm x 508mm)
Clearance: 2.5" (62mm) top and bottom
Minimum Component Size: 0201
Defects Detected:

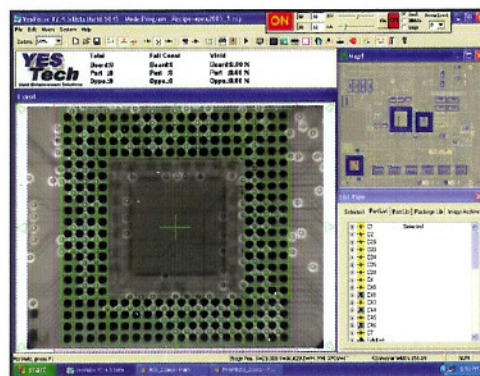
Component:	position, missing, wrong, skew, tombstone
Lead:	bent, lifted, bridging
Solder:	open, insufficient, short, solder balls
BGA:	shorts, voids, position, missing ball

Facilities:

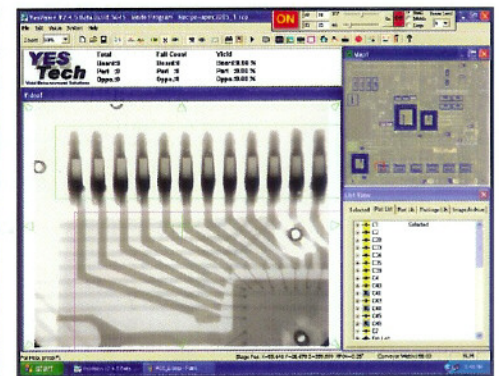
Power: 110 VAC (220 optional) 50 / 60 Hz 15amps
Footprint: 60w" x 68d" x 62h" (1,524mm x 1,727mm x 1,575mm)
Weight: 2,500 lbs. (1,136Kg)
Machine installation: < 1 hour

Safety:

YESTech x-ray systems are manufactured to comply with the federal standard for cabinet x-ray equipment as established in Title 21, Subchapter J of the code of federal regulation sections 1020.40. Lead is used to line the cabinet and door, with lead doped glass for the viewing window. Interlock switches ensure that x-ray radiation can not be generated with any part of the cabinet open or removed.



Fast, accurate and quick to program, the YTX-6000 inspects for ball presence, size, shape, shorts and voids.



Complete inspection for leads and solder; including toe and heel fillets.



YESTech Inc.

1317 Calle Avanzado • San Clemente CA. 92673 • tel: (949) 361-2714 • fax: (949) 361-2724 • sales@yestechinc.com