

Vitronics Soltec

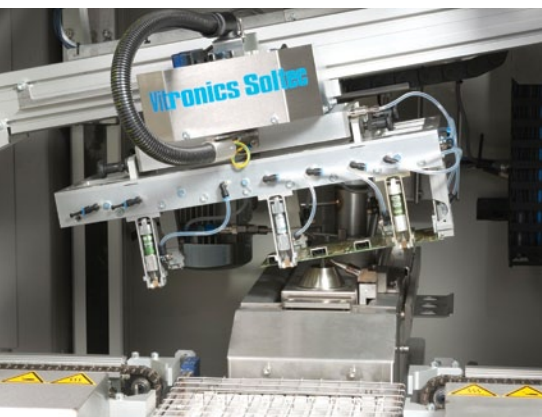
A WORLD OF SOLDERING SOLUTIONS

Proven Performance

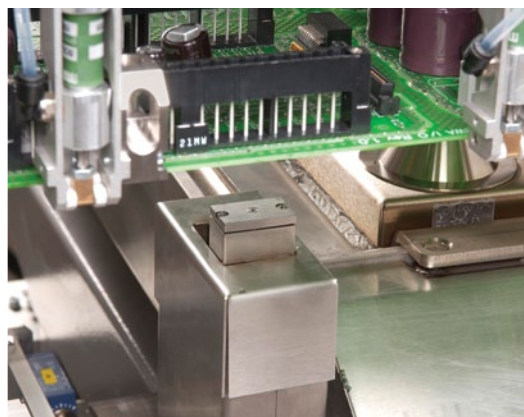


**mySelective
6745**

- Process flexibility
- Easy programming
- Soldering expertise of Vitronics Soltec
- Small factory footprint



Gripper system with 10° tilt for process flexibility



Dropjet fluxer



Advanced SDC unit

mySelective 6745

The 6745 is an easy to use, compact platform with standard in-line capability including fluxer, preheater and soldering station.

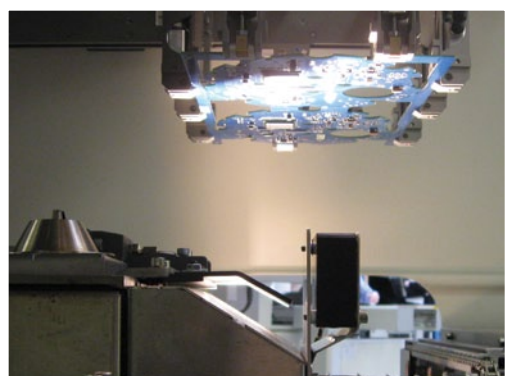
Key standard features

- SelectWave solder pot
- Teach camera
- Pressurized flux supply
- Preheat
- SMEMA interface

Key optional features

- EasyTeach 2 - offline programming w/DXF import
- Advanced solder drainage conditioner
- Dual nozzle SelectWave
- PCB warpage compensation
- Advanced process viewing camera

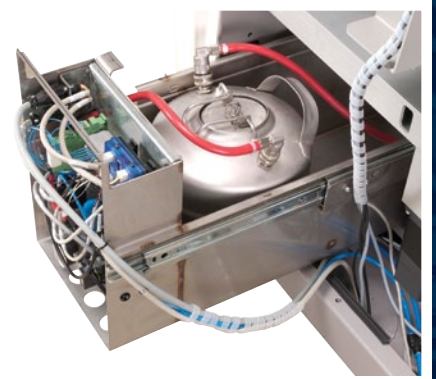
Model mySelective 6745	Max. PCB size 410 x 410 mm	Max. component height top side 91 mm	
Required PCB edge clearance 4 mm		Max. PCB weight 5 kg	Additional options <ul style="list-style-type: none">• U rotation +180°, -180• Tilting 0° or 10°• Solder pot exchange unit• Solder level control• Management info - traceability
Pressurized fluxer 130 micron nozzle, stationary	Solder pot volume 40 - 45 kg	Preheater lamp unit 5 kW quartz	
N2 consumption Min. 3 m3/hour	Power consumption 1,5 - 6,4 kW	Power supply 3 x 400 V, 50/60 Hz	



PCB warpage compensation



Tandem SelectWaves for high throughput



Optional double flux tanks allow for recipe driven flux changeover

Vitronics Soltec

An ITW Company

www.vitronics-soltec.com