

VOLT	KVA	AMP	PH	HZ
400	62	84.1	3	50

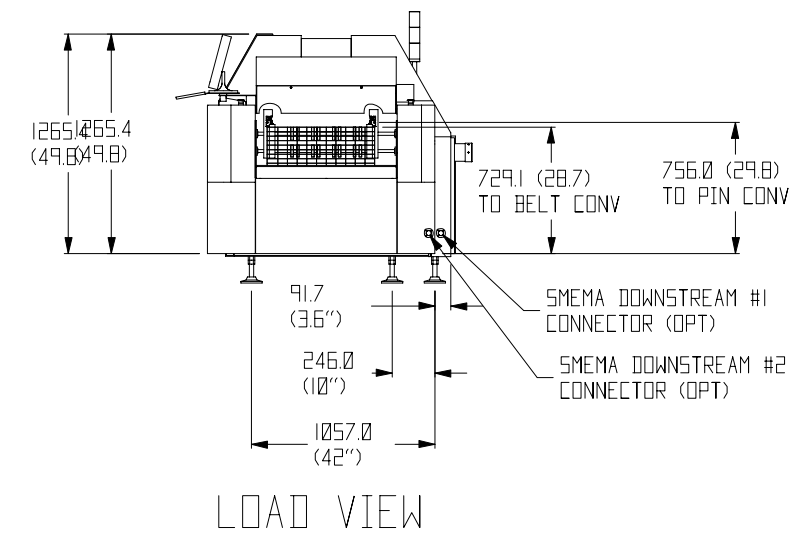
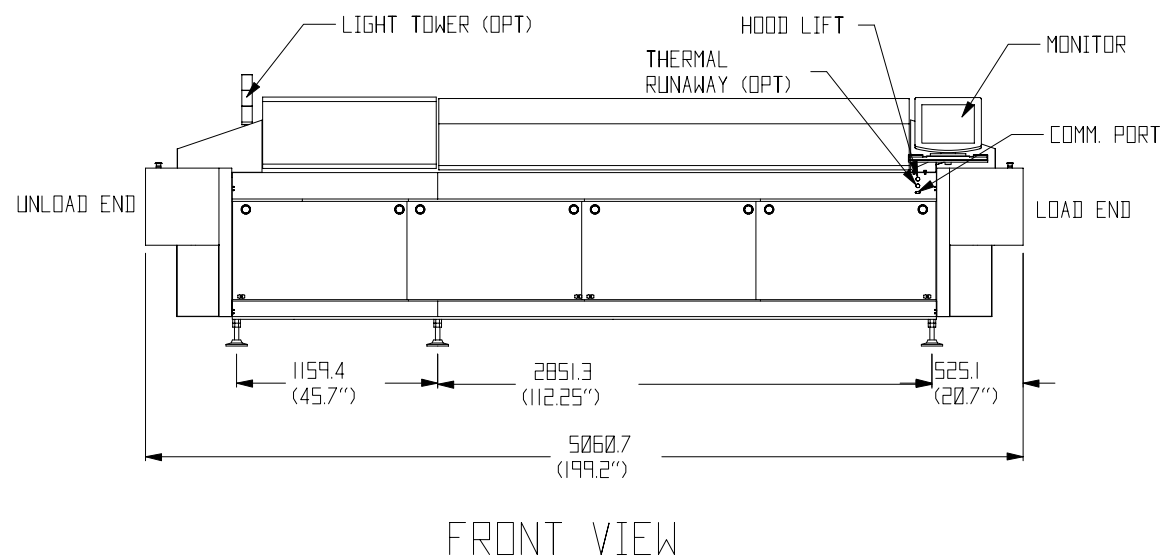
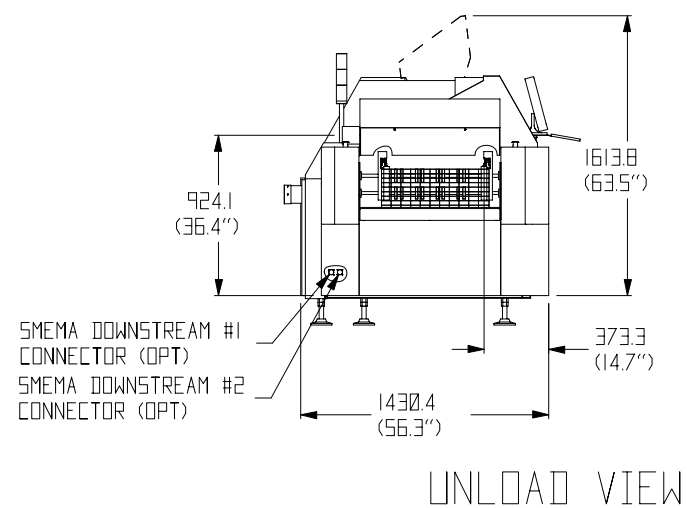
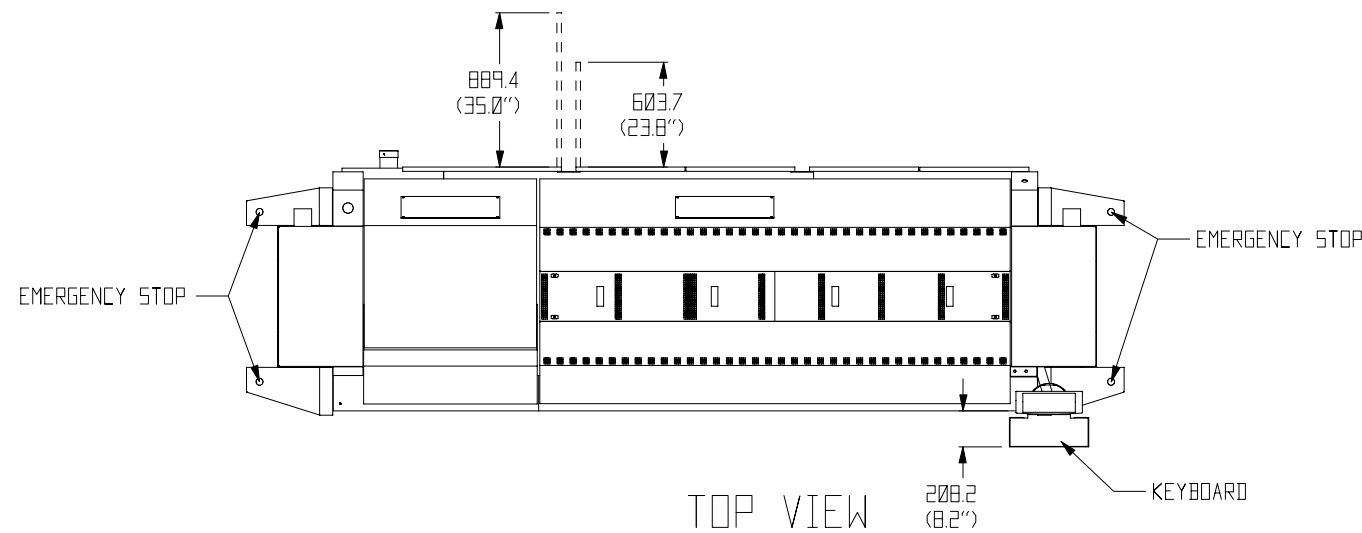
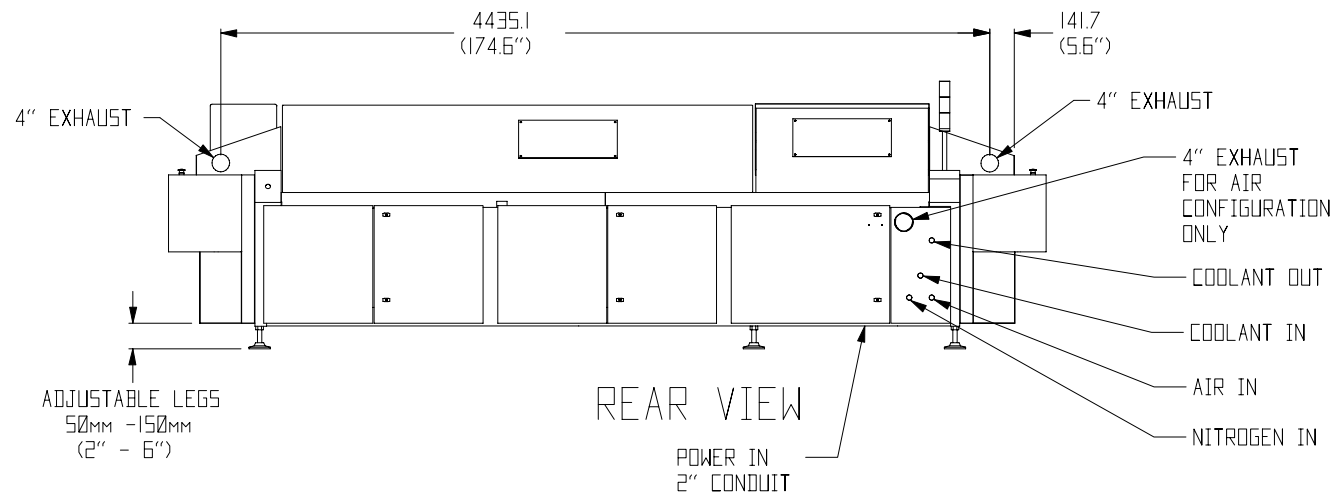
LARGEST MOTOR/LOAD 11.6 AMP
 RECOMMENDED DISCONNECT: 105 AMP
 SHORT CIRCUIT
 INTERRUPT CAPACITY: 14000 AMP

EXHAUST SPECIFICATIONS:

*STANDARD AIR OPERATION

LOAD END MINIMUM OF 255 m³/hr(150cfm) PER 102MM (4") STACK
 UNLOAD END MINIMUM OF 510m³/hr(300cfm) PER 102MM(4") STACK
 ALLOW FOR 1.0" WATER GAUGE PRESSURE DROP AT MACHINE

NO.	REVISIONS	INI	DATE
A		gio	07/26/04



TOLERANCES UNLESS NOTED DIMENSIONED IN MILLIMETERS X = ± 1.0 ANGLE = ± 0°-30' XX = ± .5 XXX = ± .25 MACHINED SURFACE 0-1500 = ± .20	DRAWN <i>R TODD</i>	DATE 03-12-04	DRAWING TITLE SALES DRAWING OMNIXCEL 7 R-L
	CHECKED	DATE	
BEND AND WELD TOLERANCES ±1.0MM UNLESS OTHERWISE SHOWN THIS SPECIFICATION IS THE PROPERTY OF ELECTROVERT USA CORP AND ANY USE WITHOUT WRITTEN PERMISSION IS PROHIBITED.	APPROVED	DATE	BUYER/PLANNER
	DO NOT SCALE DRAWING		PAGE 1 OF 1
 THIRD ANGLE	ELECTROVERT	DRAWING NUMBER 483341	REV A