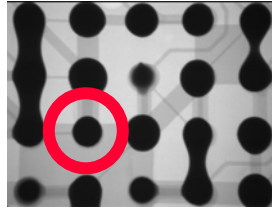
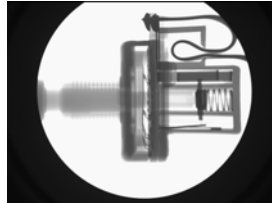


- Industry Standard for small component and small board inspection
- 6" x 8" parts handling capacity
- High-output , 100 kV side window x-ray source
- Integrated power supply and x-ray tube
- Large component to chip-scale packaging inspection
- Flexible and easy-to-operate
- Low maintenance requirement
- 5 Axis Manipulator Standard
- Worldwide Service and Parts Support
- Windows™ NT, proprietary AIP II image processor (standard)
- Printer, modem and network ready (standard)



Component Inspection



Assembly Inspection



### CONTROL INTERFACE



- Joystick X/Y table motion control
- Integrated controls for all other functions
- Sample rotation and speed control

### DISPLAY / ANALYSIS

#### AIP-II Hardware

- Windows™ Operating System..... NT
- Pentium II-based processor..... 450Mhz
- Ethernet card ..... 10/100 base t compatible
- Built-in modem..... K56 Flex

#### AIP-II Advanced Software Library

The AIP II Software suite includes:

- Windows™ based menuing and easy-to-use macros
- Frame averaging and quad view analysis
- Wide range of image enhancement and analysis tools. I.e., specific tool sets for BGA, Flip Chip and Chip scale packaging inspection, including % voiding and drill offset.
- Modules for enhanced measurement capability
- Image storage and retrieval via Iomega drive or network.
- Ethernet Card ..... 10/100 Base-T compatible

### SPECIFICATIONS

#### Physical Dimensions

Dimensions (w/ stand) .....	77.5" (H) x 45" (W) x 32" (D)
.....	197cm (H) x 114 cm (W) x 81.3cm (D)
Footprint.....	11.62 sq. ft. (0.95 sq. m)
Weight.....	325 lbs. (148 kg)
Table Load Height.....	Variable
Safe Operating Temperature .....	32° to 99° F (0 to 40° C)
Power Consumption.....	600 watts
Line Voltage.....	110 /120 VAC 60 Hz
.....	230 VAC 50 Hz power conversion kit optional

#### X-Ray Source

Energy.....	20-100kv standard
Power.....	10-60 Watts maximum
Focal spot size.....	10 microns
X-ray tube orientation.....	End-window X-ray tube

#### Image Detector

Detector Type .....	4" (10cm) X-ray image intensifier
Camera.....	CCD, 512 x 480 pixels with zoom lens
Video Output.....	RS-170 (NTSC)
Video Display.....	High Resolution 15" SVGA Color Monitor
Printer .....	Plain Paper Color Printer

#### Image Performance

Field-of-View .....	0.045" (min.) to 1.80" (max.)
.....	0.1143mm (min.) to 45.72mm (max.)
Max inspection area.....	8" (X) x 6" (Y) on table surface
.....	20.32cm (X) x 15.24cm (Y)
Spatial Resolution.....	>36 lp/mm at maximum magnification (min FOV)
Magnification.....	Up to 100X at maximum usable zoom setting
.....	Z1 (sample position), Z2 Zoom Lens independent control

#### Safety / Regulatory

Fail safe, interlocked enclosure. Complies with all U.S. and International standards for cabinet radiography systems. This product is in conformity with all applicable CDRH directives. CE compliant.

Phone: 858-635-8600 | Toll Free: 888-464-2464

Sales @ [nicimg.com](http://nicimg.com)

