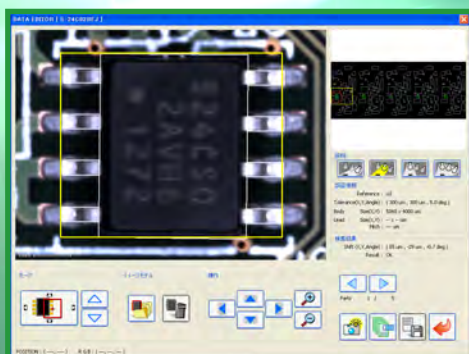


IH1

Inspection system

- Operators can easily change a placing module to an inspection module
- Possible to inspect for foreign objects, missing parts, polarity, upside-down parts, and placing deviations
- Support high quality placing through cooperation with Fujitrax Adviser



Controller operation panel



Inspection head

IH1Basic Specifications

Applicable modules	NXT II (M3 II ^{Note1} , M6 II)
Inspection area (for one area)	36.4 mm x 26.7 mm
Number of inspection sequences per panel	0603 (0201) to 26 x 26 mm
Possible inspection height	From -2 mm to +10 mm (for placing deviations, +3 mm or less)
Premounted parts height (upper surface)	20 mm
Inspection speed	650 msec per area
Possible conveyance PCB size	Depends on the conveyor type
Possible fiducial mark reading area	X-direction: Up to 212 mm (M3 II), up to 534 mm (M6 II) Y-direction: Up to 610 mm (excluding clamping dead space)
Possible inspection area	X-direction: Up to 240 mm (M3 II), up to 534 mm (M6 II) Y-direction: Up to 610 mm (excluding clamping dead space)
Inspection sequence quantity	Up to 4000 sequences per PCB
Option	Support for automatic backup pins

Notes

1.Support for M3 II modules is under development.

FUJI MACHINE MFG. CO., LTD.

19 Chausuyama Yamamachi Chiryu-shi, Aichi-ken 472-8686 Japan

Tel: +81-566-81-2110 Fax: +81-566-83-1140

•The contents of this catalog are subject to change without notice.

•Contact Fuji or a Fuji representative before transporting this product to a foreign location within your company or selling it to a third party within your country or a different country.